

DERBY RUGBY CLUB



Match Programme

Regional 1 Midlands
2022/23 Season



Accredited Club

THE Cigar Lounge Derby

The Cigar Lounge Derby is the East Midlands Premier
GOLD STANDARD HAVANA SPECIALIST



Here you will find every brand and size of all Cuban Havana cigars, including some of the more rarer and no long in production cigars. We also have the best selection of Limited Edition Havana cigars, alongside the biggest selection of Regional Limited Edition Havanas in the UK. We take special pride and joy in the many aged and vintage cigars we have available, totally unique to ourselves.

T: 01332 331548 E: info@cigarlounge Derby.co.uk www.cigarlounge Derby.com

Open Monday to Friday 9:00 to 5.00 Saturdays 9:30 to 5.30

MESSAGE FROM THE PRESIDENT

A warm welcome today to the visiting team and supporters to what is a new league, but one resembles the former Midlands Premier Division. No matter what the result, I do hope that both sets of players derive enjoyment from being able to participate. Like all "Old & Bold" players, I envy your ability to don your respective team shirts and to play the game we all love.



My nomination for president was unexpected but I take it as a great honour. I would guess that I must be one of the oldest in that role.

I call on players to use their contacts to persuade others to give rugby a go. We need strong Derby teams throughout the club. Also, this is a call to arms to request you to endeavour to get your employer to sponsor you. We are an amateur club extolling established Corinthian values. Derby Rugby Club needs your support on and off the pitch.

Enjoy your rugby and have a successful season.

Gerry Sherry

Club President 2022/2023

CHAIRMAN'S WELCOME

As Club Chairman, I am always proud to welcome people into the club and feel satisfaction of what we all achieve at the club, both on and off the field. During the closed season, a lot of work has gone into improving our facility, including refurbishments, repairs, and re-decoration. I hope you all enjoy the results. A lot of this work was completed by volunteers and my thanks go to them all, especially our "Presidents Coffee Club" crew, who meet regularly to keep on top of the jobs that need doing.



There is always a lot of work going on in the background in the lead up to the start of any season. 2022/23 was no different. I hope the hard work pays off, and that we have a great season across the whole club. Finally, I would like to thank all our supporters, advertisers, vice presidents, volunteers and sponsors. We couldn't do our work without your help and support. **THANK YOU!**

Martyn Murney

Club Chairman 2022/2023



WE'RE PROUD TO SUPPORT



Derbyshire's accredited partner for Ricoh printers, copiers, scanners and software solutions, for all your business and home office requirements.

Best prices available and we can buy out your existing contracts to save you money!
Contact us for details.



- 📧 info@docuflow.co.uk
- 🌐 www.docuflow.co.uk
- ☎ 01332 405 900



MINIS & JUNIOR RUGBY

During the 2022/23 season, the M&J rugby section at DRFC are continuing to promote the determination and achievements of our young players as they represent the club so well and with such a superb attitude.

DRFC Supports the aims to:

- Win with dignity, lose with grace
- Observe the laws and regulations of the game
- Respect opponents, referees and participants
- Reject cheating, discrimination, violence and drugs
- Value volunteers and paid officials alike
- Enjoy the game!

The credit for our success as a club is due to the commitment of our young players, the endeavours of the clubs qualified and enthusiastic coaches, our many lovely volunteers and supporters and our wonderful sponsors. A heart-felt thank you for all your help.



We continue to work within the remit of England Rugby's age grade guidance. This aids boys and girls to learn and enjoy the 15 a-side game through age appropriate building blocks. This puts inclusivity and development at the forefront.

MINI UNDER 6S
RECEPTION / YEAR 1
MINI UNDER 7S
YEAR 2
MINI UNDER 8S
YEAR 3
MINI UNDER 9S
YEAR 4
MINI UNDER 10S
YEAR 5
MINI UNDER 11S
YEAR 6
MINI UNDER 12S
YEAR 7

JUNIORS UNDER 13S
YEAR 8
JUNIORS UNDER 14S
YEAR 9
JUNIORS UNDER 15S
YEAR 10
JUNIORS UNDER 16S
YEAR 11

Head of Mini Rugby – Chira Roberts
chirarob@gmail.com

Head of Mini Rugby- Rob Paylor
robertpaylor@hotmail.com
07493200097

Head of Junior Rugby – Charles Binns
charlesbinns@derbyrfc.com
07843341817

DRFC FIXTURES TABLE



REGIONAL 1 MIDLANDS

Men's league matches from 3 September 2022 to 11 March 2023.

Date	Hosts	Guests	Sponsor
3 September 2022	Lichfield	Derby	
10 September 2022	Derby	Nuneaton	Bookers
17 September 2022	Oundle	Derby	
24 September 2022	Derby	Stoke on Trent	Vice Presidents
1 October 2022	Bridgnorth	Derby	
15 October 2022	Derby	Broadstreet	Innes England
22 October 2022	Bromsgrove	Derby	
29 October 2022	Derby	Burton	Past Players
5 November 2022	Syston	Derby	
12 November 2022	Dudley KW	Derby	
26 November 2022	Derby	Kenilworth	MFA
3 December 2022	Nuneaton	Derby	
10 December 2022	Derby	Oundle	Molson Coors
17 December 2022	Stoke on Trent	Derby	
7 January 2023	Derby	Bridgnorth	M&M Lettings
14 January 2023	Broadstreet	Derby	
21 January 2023	Derby	Bromsgrove	Sponsors Day
28 January 2023	Burton	Derby	
11 February 2023	Derby	Syston	Ensign FS
18 February 2023	Derby	Dudley KW	AMS Hayley
4 March 2023	Kenilworth	Derby	
11 March 2023	Derby	Lichfield	Redrow
Possible cup matches to follow – To be confirmed			

HERITAGE

- REDROW -



**Discover a better way to
live in Derbyshire**

Explore our stunning collection of
2, 3, 4 & 5 bedroom homes



Details correct at time of going to print, terms and conditions apply, visit www.redrow.co.uk for full details. Images are indicative only.



Rodger Mather
Rugby Chair



Mark Bradley
Head Coach

MESSAGE FROM THE RUGBY CHAIRMAN & HEAD COACH

This season the Men's first team embark on a new challenge, returning to level five and the new Regional Midlands 1. Last season our young team grew together, played excellent attacking rugby, and were promoted deservedly.

Regional Midlands 1 means we renew rivalries with clubs that we have not played for a few years. This should make for some competitive home matches and excellent awaydays. Pleasingly, players have returned in larger numbers with a large influx of new faces. This has given a real impetus to training and commitment.

Stronger competition for men's first team places will also enhance the second and third teams, both of whom are in new leagues and the former now playing in first team league rugby as part of the RFU plan to level up and localise fixtures. We also hope to see our Vet's team returning this season.

We have also re-launched our Colt's section which suffered through the impact of Covid. The new stewardship of Michael Dickens and Campbell Wigley, along with sponsorship from the University of Derby, should lead to a competitive team with more players graduating into our seniors. Indeed Charlie Barker, our new first team captain, has come all the way from the junior section.

The Women's first team under the guidance of Tais Marsh is also in a new league this year, which should also lead to less travelling and more local derbies. The growth of women's sport knows no bounds, and this is reflected in this section as more and more want to give rugby a go.

Possibly our fastest growing section is Mixed Ability. Congratulations to Mike Hawkes and the touring party that travelled to the IMART Cork international tournament and reached the Plate Final. This was a life changing trip for some of the party. This section exemplifies what makes us believe we are the most inclusive club within NLD.

Our Minis and Junior section also go from strength to strength under the direction of Chira Roberts, Rob Paylor, and Charles Binns. They are creating a great experience for youngsters and parents alike. Further expansion is planned but we need more volunteers. Please let them know if you can help.

This season will be very exciting for the club, from men's first team and beyond. Let's be proud to support the teams and come down to watch at all levels where we can. Derby RFC are on an upward trajectory across the club and so please come along for the ride, you won't regret it. **LET'S GO WIN.**



THE
SPICE
LOUNGE

Early Bird Menu

Two course meal including a drink
7 nights per week - £17.50
Served between 5.30pm and 8.00pm

Popadums and Chutney Tray



Main Course with Rice or Naan



Glass of House Wine or Bottle Beer
or Soft Drink (choice of one)



www.spicelounge-friargate.co.uk - 01332 346145

A polite note for Early Bird diners - Please be aware that customers choosing the Early Bird Menu on Friday and Saturday will be required to vacate their table within two hours. We appreciate your cooperation.

MIDLANDS ONE REGION

SATURDAY 26TH NOVEMBER 2022
KICK OFF 2.15pm

www.derbyfc.com



DERBY

VS.



KENILWORTH



Good afternoon and welcome to Haslams.

I would like to offer a warm welcome to all who have travelled with Kenilworth. I hope you enjoy your day with us and enjoy our facilities.

International rugby will be on in the clubhouse today, Wales v Australia kicks off at 3.15 although you will all be watching Derby v Kenilworth! After the game today, England v South Africa starts at

5.30. Everyone is welcome to watch the games and drink lots of beer, sensibly and in moderation of course!

It was splendid to see Derby Women get their first win of the season 2 weeks ago, beating Bridgnorth 20 – 12, taking them up to 8th place.

**Enjoy the game!
Eat, drink and be merry!**

R. Bamba

CONGRATULATIONS TO SAM TEBBS & JAKE ROOME

Pictured after the memorable victory over Syston are Sam Tebbs and Jake Roome who have both reached significant milestones. Against Syston, Sam played his 150th game. He made his debut in 2014 and his 100th appearance against Luctonians in 2019. He has scored 45 tries for Derby.

Jake played his 100th game against Burton, the week before, which also resulted in a 1 point win. Jake made his debut, in a victory, away at Leighton Buzzard, while still a Colt and announced himself by kicking 2 conversions! He has scored 15 tries and added 47 points with the boot.

Congratulations to both and here's to many more appearances!



DERBY RFC

(BLACK & AMBER)

1.	GUY BOWLEY	
2.	JACK BATES*	
3.	M. JOHNS	
4.	CHARLIE BARKER* (CPT)	
5.	TOM ANTROBUS*	
6.	CALLUM JONES	
7.	RHONDELL STABANA	
8.	SAM TEBBS*	
9.	JOSH TIZARD*	
10.	JOSH BINGHAM	
11.	LEWIS HANCOCK*	
12.	JAKE ROOME*	
13.	JACK DAWSON	
14.	PATRICK BURKE	
15.	MCGRATH VAN WYK	

REPLACEMENTS:

ETHAN PEARSON, SAM PITTMAN*,
DAVE COWELL

(*indicates ex Derby Colts/Mini/Junior player)

PLAYERS SUBJECT TO CHANGE DUE TO INJURIES

KENILWORTH R.F.C.

(YELLOW AND BLUE)

1.	J. RYAN	
2.	NICHOLAS	
3.	BOULTON	
4.	KAVANAGH	
5.	OPENSHAW	
6.	HUDSON	
7.	ANDRESEN	
8.	M. RYAN	
9.	RENOWDEN	
10.	PRICE	
11.	HARRISON	
12.	THOMPSON (CPT)	
13.	HANNAM	
14.	CAVIEZEL-COX	
15.	CANNING	

REPLACEMENTS:

SMITH, FOX, KERSHAW

PLAYERS SUBJECT TO CHANGE DUE TO INJURIES

TODAY'S TEAMS

REFEREE: MICHAEL HURDLEY
(STAFFORDSHIRE)



WITH THE COLTS

Derby 50-5 Burton

12/11/22

This week Derby Colts welcomed Burton Colts to a sunny Haslams Lane. The match started very physically with Derby taking an early lead.

Derby continued to take the opportunities which came to them and were rewarded with a second try.

Burton came back and broke through Derby's defence for their first try of the match. Derby countered with another two which made the halftime score 24-5 to Derby.

The second half was just as physical with Derby showing great support play and a willingness to run from anywhere. Showing some great ball-in-hand skills, Derby broke through Burton's defence a further four times in the second half, to make the final score 50-5 to Derby.

A great match by all and a great win for Derby.

WITH THE SECONDS

Derby 31-26 Melbourne

11/11/22

Under lights and in front of large crowds of partisan supporters of both sides, this important league game started at high speed. It was Melbourne's Joe Lucas, the 3-Counties Colt, who crossed in the corner after only three minutes. On form with the boot, Josh Peach added a penalty. The fast pace of

the game contributed to several unforced errors and poor passes by both sides. However, when Derby's scrum half, Cameron Finlay, avoided the clutches of his opposite number, his acceleration took him clear of the defence before running round the fullback for a try under the posts. Tom Bigland converted but Peach kicked a penalty to extend Melbourne's lead. Approaching the interval, a Rhys Colrien cross-kick was caught by Ryan Milton, who sped through for an unconverted try to give Derby a one-point lead at the break.

Three minutes after the restart, Milton got his second try, converted by Bigland but once again, Peach kicked a penalty. A decisive decision by prop, Dave Cowell, to run straight and hard gave his fellow forwards a platform to work from and gain ground. From a lineout, Turton cut through for a try which Peach also converted to restore Melbourne's narrow lead. Tries by Dec McManus and Dan Woods, one of which Bigland converted, gave Derby a ten point lead. However, a final attack saw Melbourne's Archie Turton dive over in the corner.

Overall, it was an exciting and entertaining game with a result that confirms Derby as league leaders.

Gerry Sherry

Derby V Kenilworth

11/10/03

This was the game that many Derby supporters felt was the first real test of the season. 4 games had been won, but that included the bottom 3 in the league. Kenilworth had been relegated from Midlands 1 last season and had made a good start to this season.

Derby kicked off, on a sunny October afternoon. The first 10 minutes were fairly even, with both sides probing for openings.

It was Derby who took the initiative. A break from the lively Paul Ratcliffe led to the first scoring opportunity, but the ball was knocked on and Kenilworth survived.

The survival proved to be temporary, as 3 minutes later Derby opened the scoring. A Tom Rolt pass released Spencer Elliot, he was stopped just short; the ball arrived at Neill Collier and he strolled over, to make it 5-0. Derby were in full flow now, the forwards were absolutely dominant, driving Kenilworth back 10 and 20 metres at a time. A series of errors, however, prevented Derby from increasing their lead and it took a Tom Rolt drop goal, via the post, on the half hour, to make the score 8-0.

It looked as if this would be the half time score, but from another forward drive, the industrious Stuart Bailey emerged with the ball to score. Half time and Derby were 13-0 in front and in complete control.

Derby were quickly into their stride in the second half and Elliot Spencer almost scored, play being brought back for a foot in touch.

After 55 minutes the next try arrived. The forwards again presented the ball on a plate and it went down the line. Tim Lawson, entering the line at pace, was stopped just short, but the ever alert Neill Collier was at his shoulder to score the try.

In the 63rd minute Ed Odell was held just short of the line and in the resulting melee, Mick Armstrong received Derby's first yellow card of the season, for injudicious use of the boot.

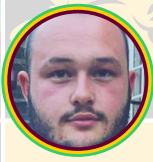
With Derby having 14 men would this be Kenilworth's chance? The answer was an emphatic no, as Derby scored their 4th try 5 minutes later. This time it was Dave Fearn who carved through the defence, to score under the posts. He converted his own try!

Derby completed the scoring in injury time. Tom Rolt kicked forward, Derby won the ball back, Richard Bygrave fed Dave Fearn and he scored his 2nd try of the day. He also converted this try to make the final score 32-0 to Derby.

This was an awesome performance, against the team lying 3rd in the league. Happy days at Haslams!.

R. Bamba

SPONSORED PLAYERS



Sam Baker

Sponsored by

www.greenhatch-group.co.uk



Charlie Barker

Sponsored by



Jake Barker

Sponsored by



Jake Bates

Sponsored by



Josh Bingham

Sponsored by



Tom Bigland

Sponsored by



Guy Bowley

Sponsored by



Matt Carlin

Sponsored by



Rhys Colrein

Sponsored by



David Cowell

Sponsored by



Jack Dawson

Sponsored by

Niall Turnbull



Lewis Hancock

Sponsored by



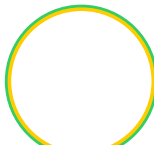
Jim Hather

Sponsored by



Callum Jones

Sponsored by



Simon Moon

Sponsored by



Ryan Milton

Sponsored by



Jeri Oldfield

Sponsored by



Lachie Phillips

Sponsored by



Sam Pittman

Sponsored by



Jake Roome

Sponsored by



Rhondell Stabana

Sponsored by



Sam Tebbs

Sponsored by



John Tizard

Sponsored by



Will Town

Sponsored by



McGrath Van Wyk

Sponsored by



Khias Webb

Sponsored by





Hollie Dingley

Sponsored by



Lisa Hood

Sponsored by



Amy Hudson

Sponsored by



Amy-Louise Lakey

Sponsored by



Izzy Orgill

Sponsored by



Lauren Scaife

Sponsored by



Abbie Pearce

Sponsored by



Ruth Smith

Sponsored by



Carmel Teager

Sponsored by



Grace Tidmarsh

Sponsored by



Contracts Limited



Tom Antrobus

Sponsored by

Haydn Renovations



Jack Partington

Sponsored by



Ethan Pearson

Sponsored by



		CURRENT SEASON			CAREER		
		GAMES	TRIES	POINTS	GAMES	TRIES	POINTS
T.	ANTROBUS	10	2	10	55	7	35
J.	BARKER	8	1	5	64	10	50
C.	BARKER	10	2	10	95	11	55
J.	BATES	10	4	20	62	12	60
T.	BIGLAND	3			13	4	20
J.	BINGHAM	8		74	76	9	352
G.	BOWLEY	9			9		
P.	BURKE	9	5	25	20	12	60
R.	COCKAYNE	1			2		
R.	COLREIN	2			2		
D.	COWELL	4	1	5	8	4	20
J.	DAWSON	8	2	10	59	18	90
L.	HANCOCK	10	9	71	133	56	471
D.	HARRIS	1			1		
J.	HARVEY	4	1	5	24	1	5
M.	JOHNS	8			28		
C.	JONES	8	3	15	35	12	60
R.	MILTON	2			41	6	30
J.	OLDFIELD	4	2	10	35	4	20
J.	PARTINTON	4			13	1	5
E.	PEARSON	2			13	3	15
L.	PHILLIPS	2			2		
S.	PITTMAN	10			61	2	10
J.	RIDLEY	1			18		
J.	ROOME	8			102	15	122
J.	SIMPSON	2			50	20	100
R.	STABANA	5			30	7	35
S.	TEBBS	9	1	5	151	45	225
J.	TIZARD	8	2	10	156	32	182
M.	VAN WYK	8			116	64	395
K.	WEBB	1			1		

PLAYER STATISTICS

ALSO PLAYING THIS WEEKEND

Bridgnorth v Stoke on Trent

Broadstreet v Oundle

Bromsgrove v Nuneaton

Burton v Lichfield

Syston v Dudley Kingswinford

FORTHCOMING GAMES

3/12/22 • KO 2.15

NUNEATON V DERBY

CV11 6RR • 02476 350900

10/12/22 • KO 2.15

DERBY V OUNDLE

COME AND SUPPORT YOUR CLUB



@DerbyRugbyClubdfc



@DerbyRugbyClub

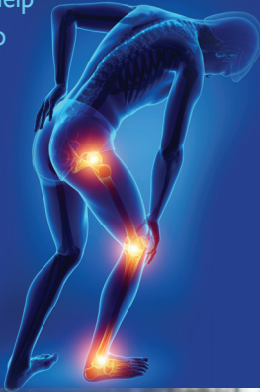
REGIONAL 1 MIDLANDS

	TEAM	P	W	D	L	F	A	D	B	P
1	DUDLEY KINGSWINFORD	10	8	0	2	324	149	175	9	41
2	BROMSGROVE	10	6	0	4	300	228	72	10	34
3	DERBY	10	7	0	3	280	287	-7	3	31
4	BRIDGNORTH	10	6	0	4	245	230	15	7	31
5	SYSTON	10	6	0	4	279	200	79	6	30
6	BURTON	10	5	0	5	257	255	2	10	30
7	KENILWORTH	10	5	0	5	227	232	-5	7	27
8	OUNDLE	10	5	0	5	202	256	-54	7	27
9	BROADSTREET	10	4	0	6	254	303	-49	8	24
10	STOKE ON TRENT	10	3	0	7	300	337	-37	9	21
11	LICHFIELD	10	3	0	7	255	366	-111	7	19
12	NUNEATON	10	2	0	8	242	322	-80	8	16



THE SPORTING JOINT

An experienced, multidisciplinary approach will help get you back to your activity, whether it's return to sport or back to the office desk pain-free.



**Proud
Supporter
of Derby
Rugby Club**



Physiotherapy



**Sports
Therapy**



**Sports
Massage**



**Thai
Massage**



Podiatry

with your
match programme

**£5
OFF**

an initial
consultation

PROFESSIONAL PROACTIVE PHYSIOTHERAPY

Tel 01332 369713

info@thesportingjoint.com

Derbyshire County Cricket Club, Nottingham Rd, Chaddesden, Derby DE21 6DA

Director: Kate Stalker BSc Physiotherapy (South Africa), Masters of Manual Therapy
(Ex Derbyshire County Cricket & New Zealand Mens' Cricket Team Physiotherapist)





HORSLEY LODGE



Beautiful hotel and golf club nestled
on the edge of the Peak District
EXPERIENCE WHAT HORSLEY HAS TO OFFER
01332 780838
horsleylodge.co.uk

GOLF CLUB • HOTEL • EVENTS • WEDDINGS



HORSLEY LODGE DRIVE, SMALLEY MILL ROAD, HORSLEY, DERBYSHIRE, DE21 5BL



OUR LOCALLY SOURCED BEEF IS HANDSLICED
AND MARINATED IN A BLEND OF SPICES. THE
BEEF IS THEN AIR DRIED TO CREATE AN
INTENSE, PUNCHY FLAVOUR!

ORIGINAL
GARLIC
CHILLI
GARLIC & CHILLI

AVAILABLE BEHIND THE BAR AT HASLAM'S

www.villagebiltong.com

@village_biltong f

Produced in Etwell, Derby

THE ULTIMATE POWER PROTEIN SNACK

Proud Sponsors of Derby RFC



RAYGAR ARCHITECTURAL & ENGINEERING SUPPLIES

**STOCKING OVER 30,000 PRODUCTS.
SUPPLYING OVER 5 MILLION ITEMS
PER YEAR!**

Mortice Locks	Door Furniture
Profile Cylinders	Window Furniture
Bathroom Locks & Latches	Gate Fittings
Nightlatch & Codelocks	Silicones & Adhesives
Security Padlocks & Cut Keys	Fixings & Fasteners
Door Closers & Panic Hardware	Power Tool Accessories
Tool Accessories	Safety & Hi Viz

Hinges

- Architectural Ironmongery
- Sealants & Adhesives
- PPE & Workwear
- Fasteners & Fixings
- Engineering Consumables
- Hand & Power Tools



www.raygar.co.uk | Call sales on: 01332 207222 | Order now: sales@raygar.co.uk



DERBY BUCKS MIXED ABILITY RUGBY



Mixed Ability Rugby involves disabled and non-disabled players aged 17+ playing contact rugby together on the same team. Regardless of age, disability or experience we'd love you to get involved! All you need is boots/ trainers, clothes suitable for running around and a 'give it a go' attitude!

If you'd like to get involved, training is at Derby Rugby Club, every Friday at 6:15pm. For more info contact Mike Hawkes via mhawkes92@gmail.com or **07850421280**.



essential
PRINT SERVICES

Smarter, better, fresher print

Since 2011, we've provided outstanding print to hundreds of Derby's top businesses.

Our vast product range includes:



Calendars



Branded Pens



Flyers & Leaflets

For ideas and prices call our team today or chat with us online.

01332 418377

The most positively reviewed printer in Derby



www.essentialprintservices.co.uk

DERBY WOMEN

Women's rugby at Derby Rugby Club


Wednesday 19:00-20:30


Thursday 19:30-20:30

We have something for everyone. Fantastic opportunities and facilities including: physio access, regular social events and much more! Currently in National Cup Midlands 1 League.

Come and join our ever growing, progressive family. Contact us now to start your incredible rugby journey!

@drfcwomen_  www.facebook.com/drfcwomen

 www.derbyrfc.com/ladies

 membership.ladies@derbyrfc.com



THE Cigar Lounge Derby

The Cigar Lounge Derby is the East Midlands Premier
GOLD STANDARD HAVANA SPECIALIST



Here you will find every brand and size of all Cuban Havana cigars, including some of the more rarer and no long in production cigars. We also have the best selection of Limited Edition Havana cigars, alongside the biggest selection of Regional Limited Edition Havanas in the UK. We take special pride and joy in the many aged and vintage cigars we have available, totally unique to ourselves.

T: 01332 331548 E: info@cigarlounge Derby.co.uk www.cigarlounge Derby.com

Open Monday to Friday 9:00 to 5.00 Saturdays 9:30 to 5.30



Friends of Royal Derby Hospital

Registered Charity No. 218716

Uttoxeter Road, Derby DE22 3NE

The Friends are a registered charity looking for volunteers to help in outlets around the hospital.
WHAT DO WE DO?

We run two tea bars, two shops and two ward trolleys offering refreshments, sandwiches, cakes, crisps, toiletries and much more.

WHO ARE WE?

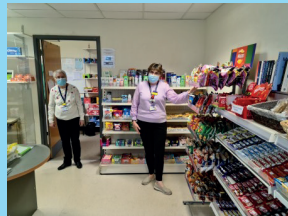
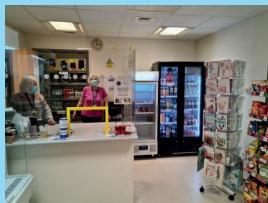
All types of people, young and less young who have a few hours to spare each week or fortnight.

WHAT IS OUR GOAL?

To provide a service to the patients, staff and visitors and raise funds which go directly to the Royal Derby Hospital Trust in the form of new equipment.

WHAT CAN YOU DO FOR US?

To enable us to keep all the services running based on a 3 hour shift pattern we need c.24 volunteers each day. If you could spare some time to help, please contact Jan Newbury, Membership Secretary on 07905 397147 for more information.



CLUB SHOP
SHOP ONLINE FOR ALL YOUR
TRAINING, MATCH AND
SUPPORTERS CLOTHING AND
ACCESSORIES



oneills

SINCE 1918

OR GO TO [ONEILLS.COM](https://www.oneills.com)

CLICK ON **CLUBS & EDUCATION**

SEARCH FOR **DERBY RFC**

HAVE YOU GOT A SPECIAL
OCCASION COMING UP?

DISCOVER...

DARLEYS

FINE DINING RESTAURANT

INCREDIBLE FLAVOURS
STUNNING PRESENTATION

GIFT EXPERIENCE VOUCHERS • CORPORATE DINING

[darleys.com](https://www.darleys.com)

WATERFRONT • DARLEY ABBEY MILL • DERBY DE22 1DZ

MFA

Building Control Ltd



Derbyshire's leading
Building Inspectors

Offering a common sense
approach to Building Control

Proud sponsors of
Derby Rugby Club